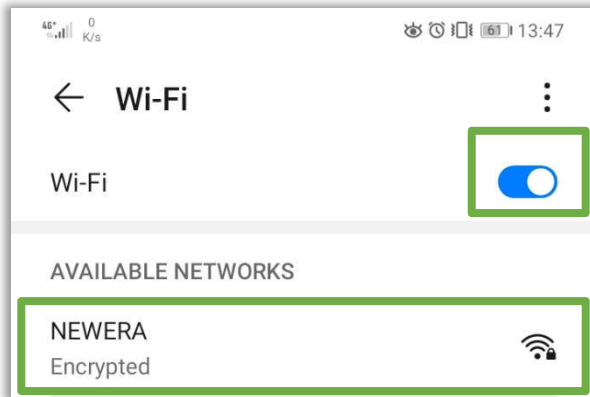
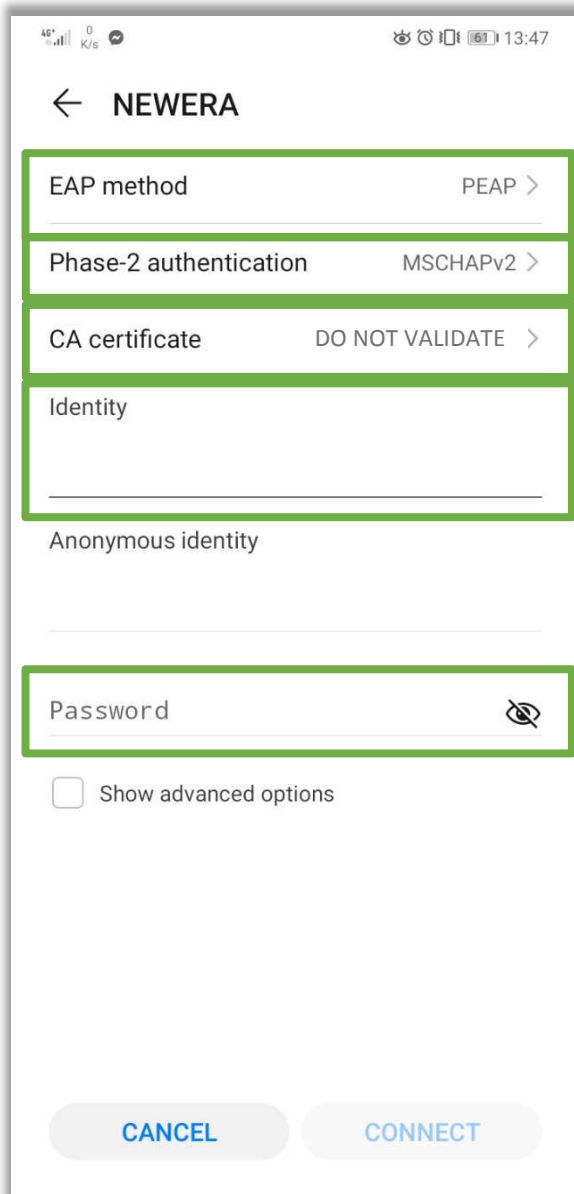


Android

1. Turn on Wi-Fi and search for the **NEWERA** or **NEWERA-5GHz**.

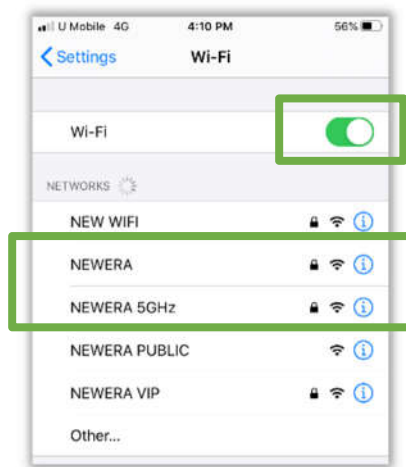


2. Fill in as below:
 - a. EAP method: **PEAP**
 - b. Phase 2 authentication: **MSCHAPv2**
 - c. CA Certificate: **DO NOT VALIDATE / NONE**
 - d. Identity: <E-Account username>
 - e. Password: <E-Account password>

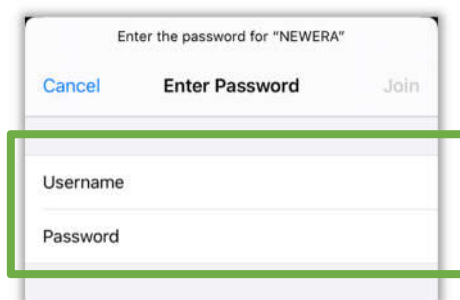


iOS

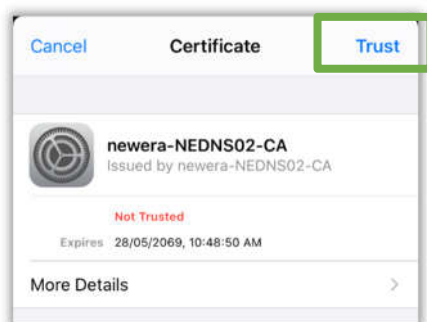
1. Turn on Wi-Fi and search for the **NEWERA** or **NEWERA-5GHz**



2. Username: <E-Account username>
Password: <E-Account password>



3. Click **TRUST**

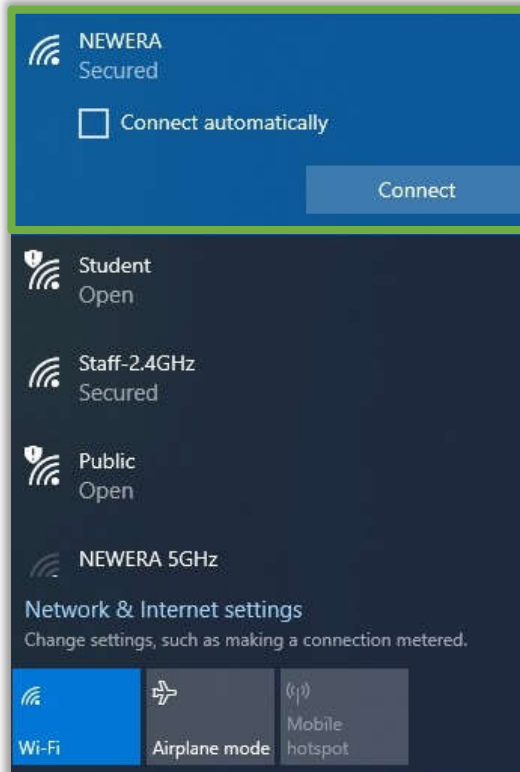


4. Connected and you are online now

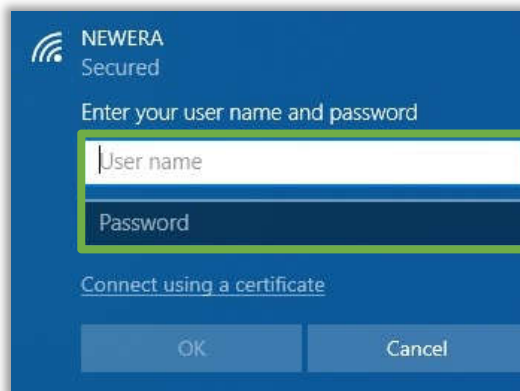


Microsoft Windows 10

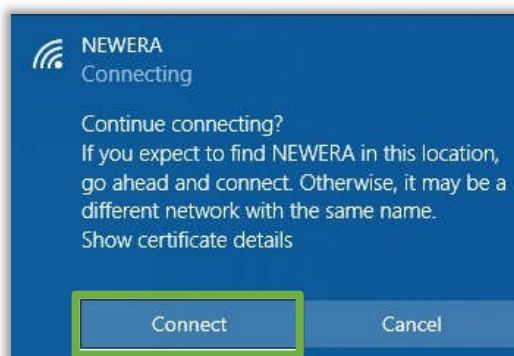
1. Turn on Wi-Fi and search for the **NEWERA** or **NEWERA-5GHz**.



2. Fill in as below:
 - a. Username: <E-Account username>
 - b. Password: <E-Account password>

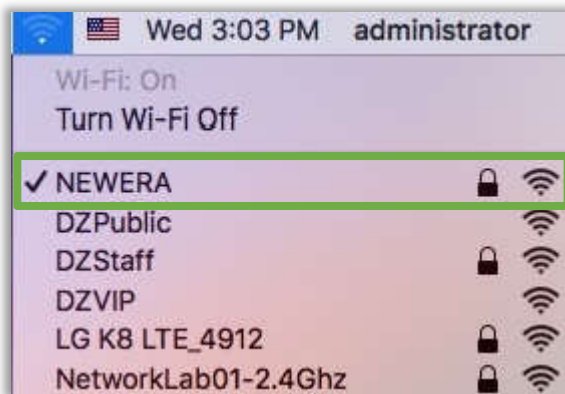


3. Select *connect* to accept the certificate

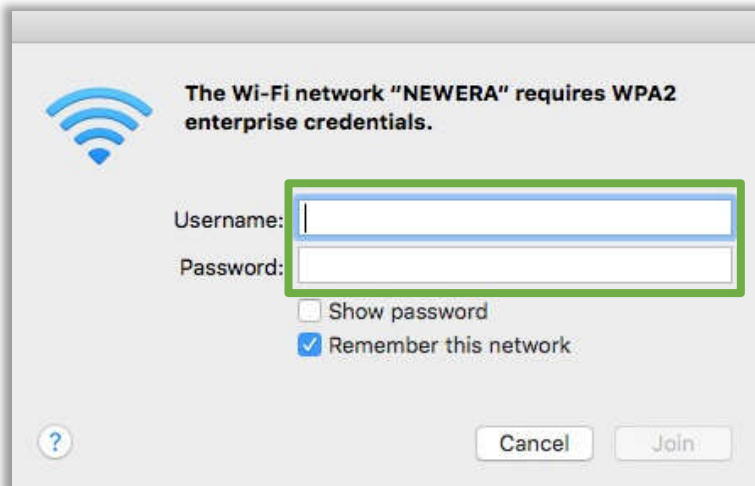


MAC OS X

1. Turn on Wi-Fi and search for the **NEWERA** or **NEWERA-5GHz**.



2. Fill in as below:
 - a. Username: <E-Account username>
 - b. Password: <E-Account password>

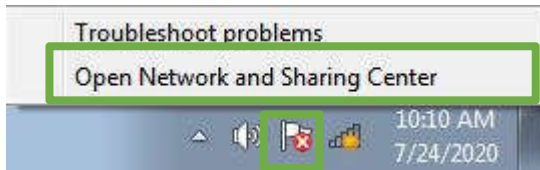


3. Select *continue* to accept the certificate.

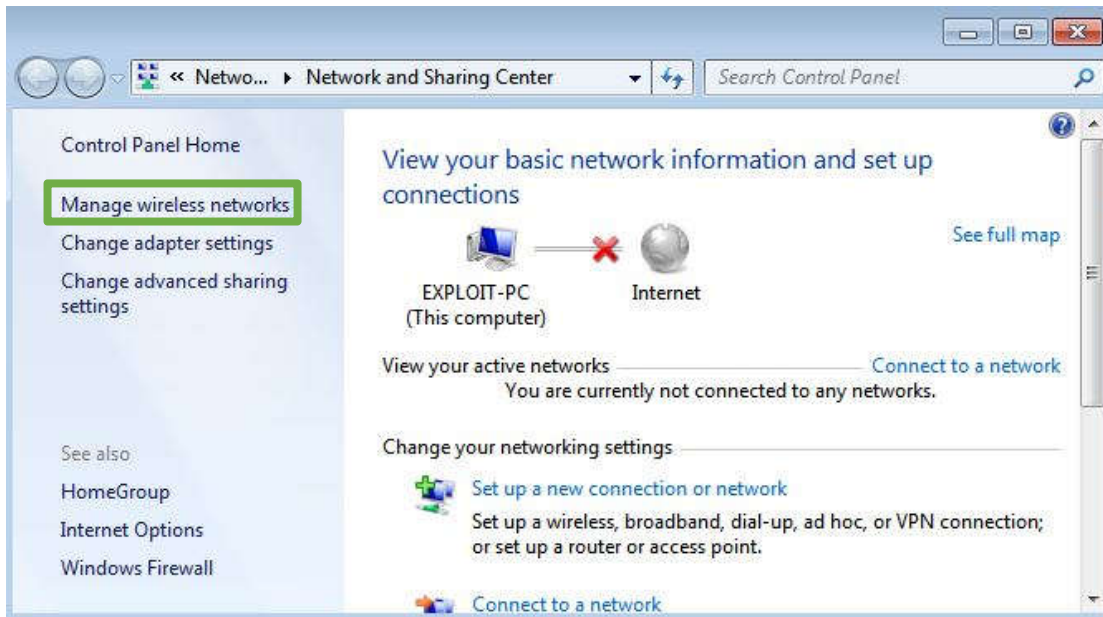


Windows 7

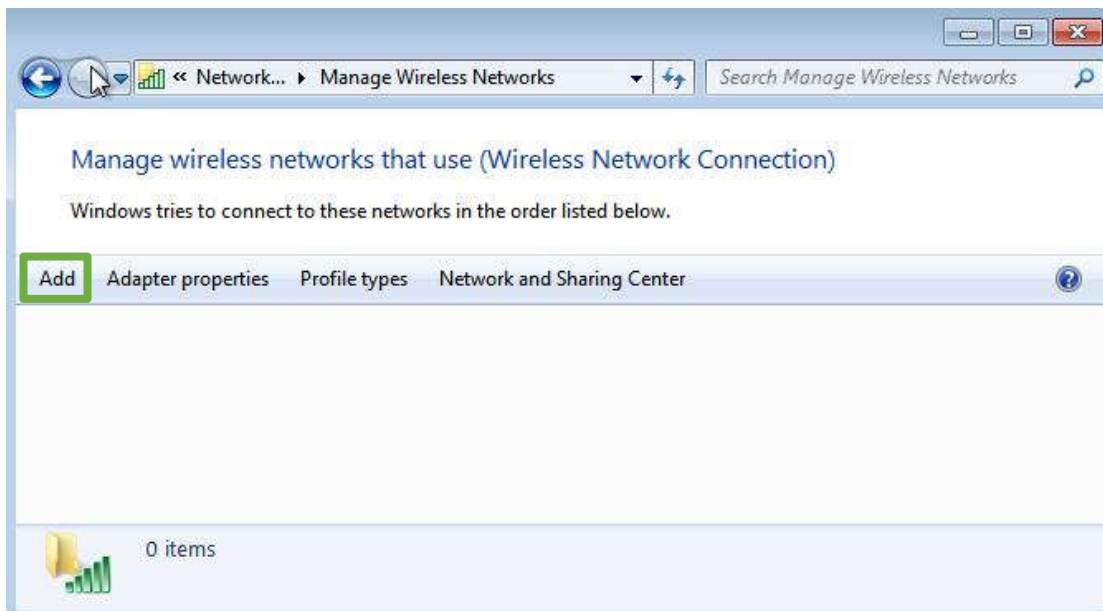
1. Right click on wireless network in the tray and select: “Open Network And Sharing Center”.



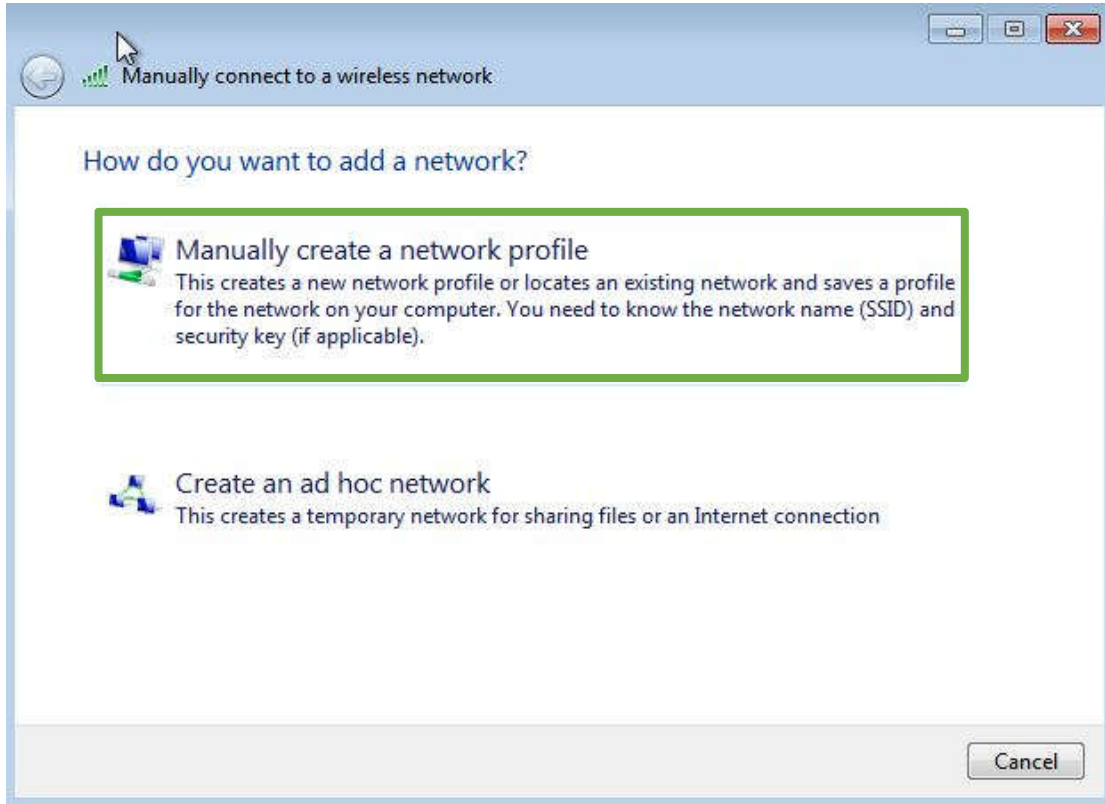
2. Click on “Manage Wireless Network”



3. Click on “Add”.

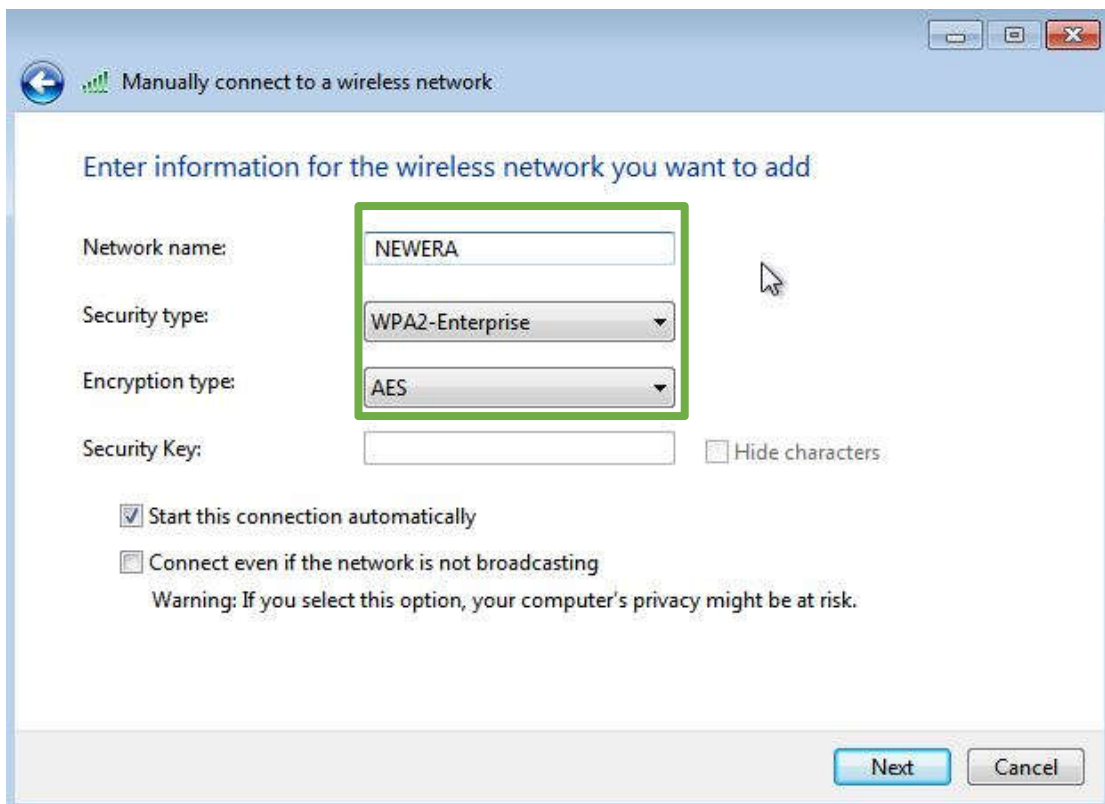


4. Select “Manually create a network profile”.

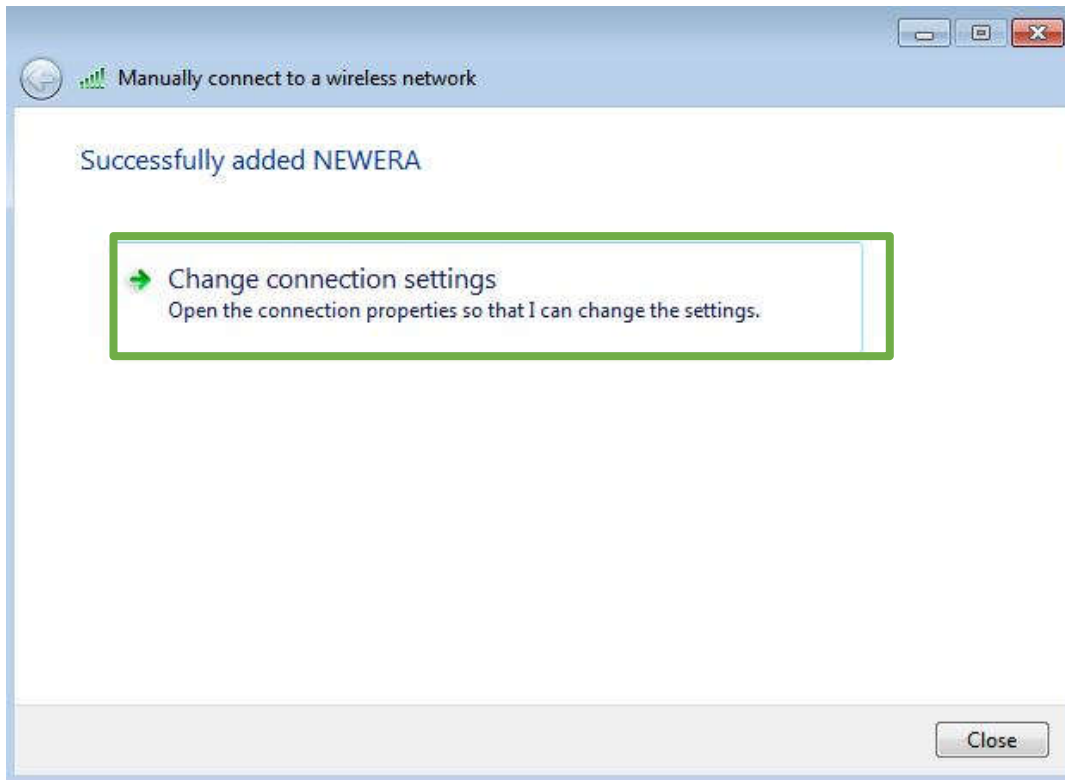


5. Fill in as below:

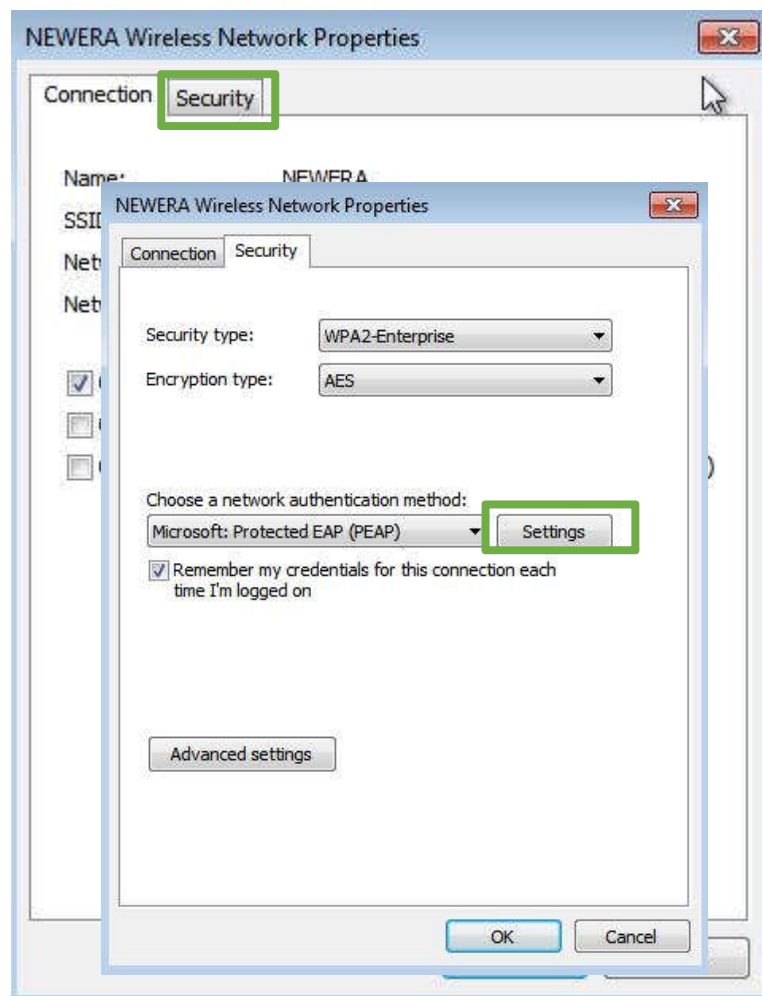
- a. Network name: **NEWERA**
- b. Security type: **WPA2-Enterprise**
- c. Encryption type: **AES**



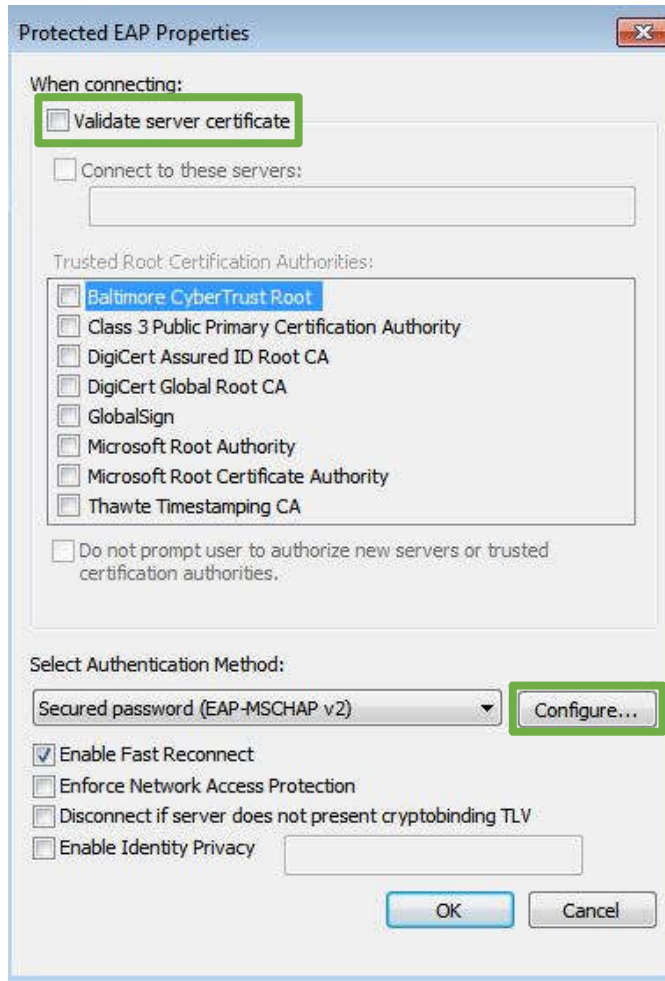
6. Click on "Change connection settings"



7. Select "Security" Tab
8. Click on "Settings"



9. Uncheck “Validate server certificate” and click on “Configure”



10. Uncheck the “Automatically use my Windows logon name and password(and domain if any)”

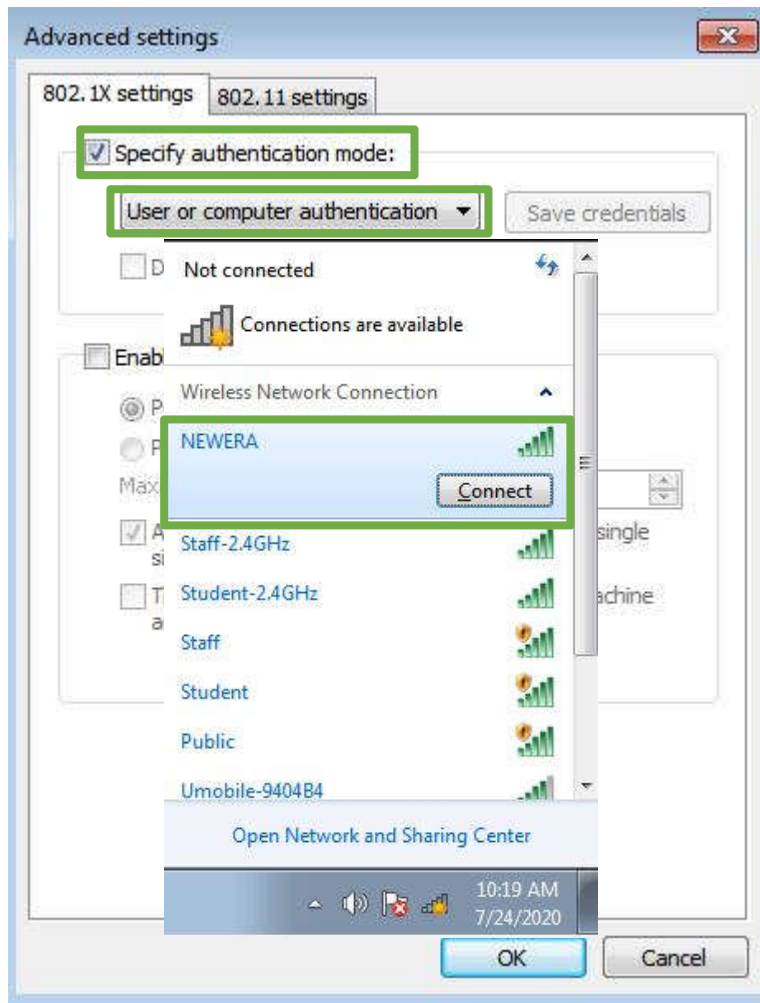


11. Click twice “OK” to save the configuration.

12. Click “Advanced settings”



13. Check the “Specify authentication mode:” and select on “User or computer authentication”



14. Click “OK” to exit.

15. Click “Close” to exit

16. Click on the wireless icon in the tray and connect to the “NEWERA”

17. Fill in as below:
- a. Username: <E-Account username>
 - b. Password: <E-Account password>



18. Connect Successful